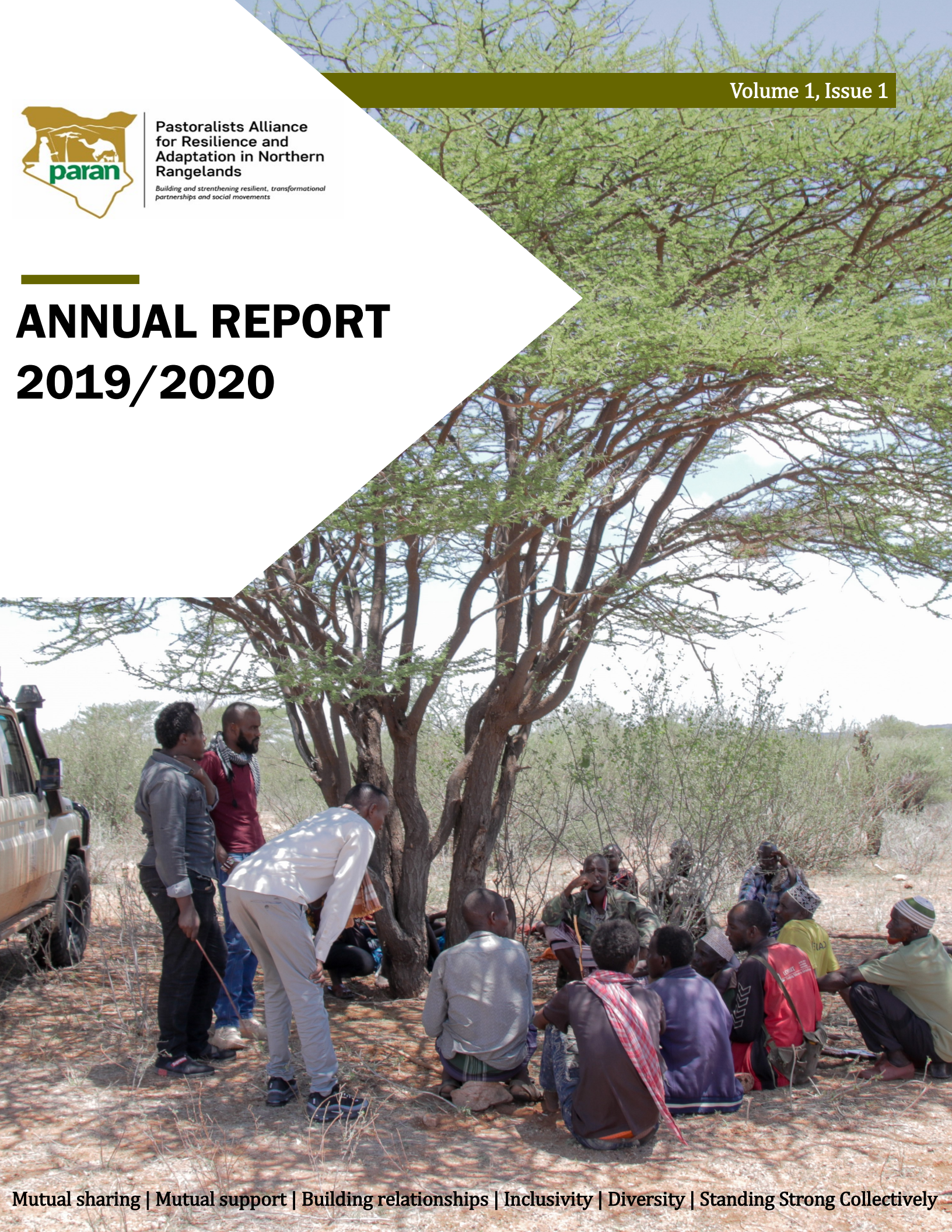




Pastoralists Alliance
for Resilience and
Adaptation in Northern
Rangelands

*Building and strengthening resilient, transformational
partnerships and social movements*

ANNUAL REPORT 2019/2020





**Pastoralists Alliance
for Resilience and
Adaptation in Northern
Rangelands**
*Building and strengthening resilient, transformational
partnerships and social movements*

PARAN ALLIANCE 2019/2020 ANNUAL REPORT

ABOUT PARAN ALLIANCE

PARAN is a Maasai word used by all Maasai transboundary territorial sections (in Kenya and Tanzania) to mean *mutual sharing and support*. It is a social strategy used to uplift, support and stabilize members of the community who have been hard hit by a calamities for instance when a family loses all its asset during a drought – they are welcome to live with relatives and “livestock loans” are donated by the community.

PARAN is about building relationships and caring about one another – so we can stand strong collectively. It is an indigenous knowledge and strategy for wellbeing that continue to be practiced at the family, clan and community levels and occasionally between communities that share common resources.

The initial founding partners of PARAN are: IMPACT, ISID (Indigenous Strate-

gies and Institution for Development), Waso Trust Land, Kivulini Trust and Samburu Women Trust.

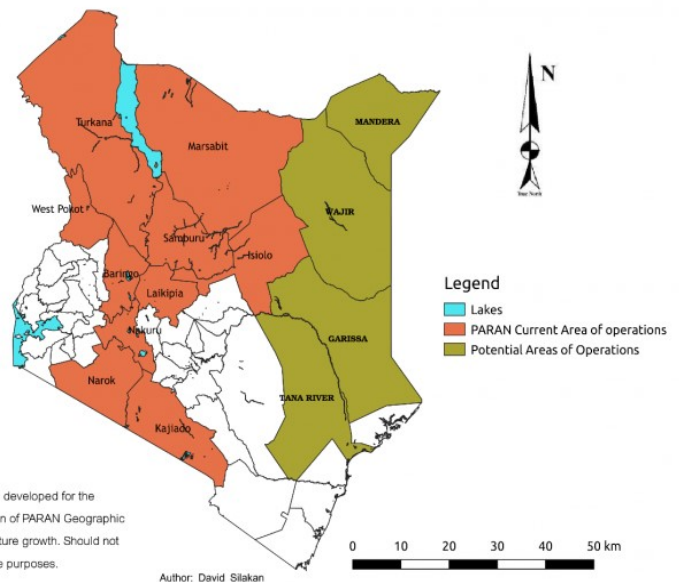
These organizations have diverse experience, unique skillsets, innovations and strategies to be able to mutually support one another in a challenging and rapidly changing environment. In this way they can foresee and confront internal and external challenges with confidence.

OUR SCOPE

The geographical focus of PARAN is Marsabit, Isiolo, Laikipia and Samburu (MILS).

With the potential members who have expressed interest in joining the Alliance, the geographic scope widens further to cover Laikipia, Samburu, Isiolo, Baringo, Turkana, Marsabit, Kajiado, West Pokot counties and by extension northern Tanzania and Southern Ethiopia due to the cross border engagement with Southern Ethiopia Oromia Pastoralists and Northern Tanzania Maasai and parts of Northern Uganda Karamoja.

MAP OF PARAN GEOGRAPHICAL AREAS OF OPERATION



OUR PARTNERS:



LETTER FROM THE DIRECTOR

Dear Partners,

As the director of IMPACT, I would like to express my gratitude and regards to you our partners and the communities that we serve as an organization. It is worthy to note that, Covid 19 pandemic has spined the world in an unprecedented direction affecting all the aspects of life. During the pandemic period PARAN-IMPACT has been able to create awareness and address the stressing needs of the vulnerable members of the community through the CJRF grant that the 5 members of the alliance were sub-granted. The pandemic came in at a time when the government was not prepared and slowed down the implementation of the activities due to the containment measures. However, through the collaborative working relationship with the county governments and the administration, our organization was acknowledged as a necessary service provider which led to the resumption of carrying out activities according to the WHO and Government of Kenya guidelines on Covid-19.

As an organization, we are proud that our programs especially the strengthening of the social movement and creating awareness on the securing the land tenure was ongoing, although, not with the magnitude that we envisaged. As we stand 3 communities have transitioned to Community land in Laikipia and more than 18 have completed the registration process and have elected their community land Management Committees. The inclusion of women is evident as the registers show and are among the office bearers in the committees. The collaboration that has been forged between IMPACT and the National Land Commission is a great milestone that will give traction to the process among the communities.

As the director of IMPACT, I sincerely appreciate the continued communication and discussions as a grantee of CJRF, the learning opportunities through the small grant, discussions on pertinent topics via zoom and the all the updates that we have been receiving. I look forward to our continued partnership in building viable social movements that can address the Climate change and other emerging crisis.



Many thanks,

Malih Ole Kaunga,

Director IMPACT/Convenor
PARAN Alliance.

INSIDE THIS ISSUE:

Capacity strengthening for PARAN Alliance members	4
<ul style="list-style-type: none"> Sang'inda foundation strategic plan Support to Gurapau community 	
Partners capacity strengthening	5
<ul style="list-style-type: none"> UN processes, protocols and Mechanism Workshops Celebration of International day for Rural Women at Ngare Mara Baseline assessment on the impact of Community Land Sub-division to women/ women groups in Samburu Central Development of Community Free Prior Informed Consent (FPIC) Guideline 	
Building social movements around land registration	6
<ul style="list-style-type: none"> Community Land Titling and Registration Development of Movement building tool 	
Covid-19 rapid responses as a collective movement	6
Understanding the Landscape and bridging the gap between research, policy and practices	7
Partnership and broadening the space for Advocacy and influence	8
<ul style="list-style-type: none"> MoU signed between National Land Commission (NLC) and IMPACT on Areas of Collaboration 	
Influencing County & National level policy & dialogue	9
Virtual meetings and Learning	9
In-Person PARAN Alliance Meetings held	9
<ul style="list-style-type: none"> Outputs of the meetings held 	
Learning, Linking and Networking. Tanzania Ex-change Visit	11
Membership	11
Online capacity building under our partners leveraging on CJRF support	12
New funding partners	13

PARAN ALLIANCE COLLECTIVE AND LEVERAGED HIGHLIGHTS

This briefing aims to highlight the outcomes of the collective joint activities of PARAN Alliance, the partnership established, and generating evidence through decolonizing research approach. In addition, it brings out clearly the local communities self-organizing during these unprecedented times of covid-19 and the invasion of the desert locust and climate related crisis.

Guided by the two broader objectives i.e.

- (i). To bring together the Pastoralists CSOs and collectively consolidate their efforts as a strategy to strengthen the role of communities in natural resource governance for sustainable development. Ultimately, build an inclusive social movement for pastoralists in north Kenya.
- (ii). To reinforce our shared interests in building resilient communities, advocacy on the recognition and protection of community lands and strengthening of customary institutions necessary for supporting traditional livelihood practices.

THEMATIC FOCUS 1:

CAPACITY STRENGTHENING FOR PARAN ALLIANCE MEMBERS

KEY RESULT AREA 1: INSTITUTIONAL CAPACITY STRENGTHENING

Sang'ida Foundation Strategic Plan

PARAN alliance purposes to strengthen its members both in their individual and collective activities. With regard to this, PARAN supported the Sang'ida foundation, a member of the alliance representing People Living with Disability (PWDs), in developing their strategic plan. This was made possible through a 3-day exercise that

brought together a variety of stakeholders from the county government, other non-pastoralists CSOs working in Laikipia and the National council representative. The exercise saw the development of the draft strategic plan which is on review for recommendations by the board of Sang'ida whether it reflects the aspirations of the foundation.

“PARAN members aim to work together in a coordinated approach, learn and over time, generate a sustained flow of collective and individual actions, activities and lasting positive impact”

Support to Gurapau Community

The Elmolo community reached out to PARAN Alliance and requested for assistance in enabling them to self-organize and mobilize the community to create awareness on the on the Community Land Act and to initiate the process. Through PARAN's support, the Elmolo community have been able to define the community and their land with the submission of their inventories to the National Land Commission. The office of NLC has taken the issue on the basis that the Elmolo are a minority and the fear of them

being short-changed or absorbed by the major Gabbra and Borana community from Marsabit. As new members of the alliance IMPACT-PARAN have taken



Picture 1: IMPACT/PARAN visit to Gurapau community

the initiative to document the impact of the rising waters of lake Turkana that has displaced the Elmolo and claiming parts of the lake where they carry out the fishing activities. This is in relation to the impacts of climate change.

KEY RESULT AREA 2: PARTNERS CAPACITY STRENGTHENING

UN Processes, Protocols and Mechanism Workshops

Two trainings of 3-day each were conducted on the UN processes, protocols and Mechanism. Adhering to the covid-19 pandemic and the WHO-Government containment measures, PARAN Alliance members were convened and taken through the UN conventions, treaties and the processes that involve human rights. The participants were also taken through the CBD and the CBA platforms and enlightened on how they can participate. In addition to UN processes, Issues on Climate Change and climate finance was part of the training to create awareness on the fund and how the alliance can work with respective counties to access the funding or influence the climate change policies.

Celebration of International day for Rural Women at Ngare Mara

This event brought together the IPs women from 5 counties to celebrate grassroot indigenous women resilience to climate change at Turkaba cultural women village. In light of this celebration, it was taking stock of women gains and the representation of the rural in the international platforms.

“Such an alliance is innovatively designed and started; they don’t just happen. Alliance and movement builders take deep considerations of what elements are essential, choices are available and the implications of each strategy that is adapted ”

Baseline Assessment on the Impact of Community Land Sub-division to Women/ Women Groups in Samburu Central

Under the community land Act of 2016, a few communities had sorted to subdivide the land and relinquish the old communal land ownership system. This has harshly affected women more than the other genders. As the primary beneficiaries of the ecological goods, women have suffered the effect of subdivision as they now walk long distance to fetch firewood and water. With individualization of land, communities are becoming a little more hostile and the social fabric that used to exist among the pastoralist communities has been disrupted. With new allocation of land some families have been forced to demolish their houses as required by the survey. These are families that have lived in the area for over a period of 5 decades. During this visit we encountered families that were demolishing their fences as the survey illustrated different allotment for family. They were undertaking these with so much bitterness citing inefficiency in these land management/ ownership form that is disrupting their initial way of living.



Picture 2: Training of IP on International processes, protocols and mechanisms

Development of Community Free Prior Informed Consent (FPIC) Guideline

Looking at the current scenario of the government and investment projects that are happening or aimed to be implemented on indigenous peoples and local communities land, the development of the FPIC guideline for communities to engagement with government and investments is necessary. The investments are in diverse forms when it comes to land use. Much of Northern Kenya is under the former trust land and communities often find themselves forcefully evicted or their lands taken without their consent. The FPIC guideline underwent review from a team of 12 members from PARAN and partners to ensure it is all inclusive.

THEMATIC FOCUS 2: BUILDING SOCIAL MOVEMENTS AROUND LAND REGISTRATION

Community Land Titling and Registration Process

The project through the grant and the subaward to the grantees was aimed at fast-tracking the security of communities' land and the registration process for the PARAN Alliance constituents. As of today, the process has been accelerated in Laikipia and Samburu where 3 communities (Musul, Laikipia and Makurian) in Laikipia have already had their land Titled and 1 in Samburu especially the former group ranches. Isiolo and Marsabit counties through the Land sector forum have been able to present their inventories of how the communities would want to define themselves as a requirement for the registration that will lead to the titling of their community lands. The Isiolo and Marsabit inventories have been rejected by the National Land Commission though through the litigation efforts to counter forceful acquisition by the Kenya Defense Forces and the County governments delineation of and proposing the titling of the urban centres.

The effort of the NLC include;

- 3 former group ranches in Samburu have developed their by-laws. In Laikipia, Nkilotiti, and Ilpolei have gone through the process and submission of the CLMC forms.
- Samburu indigenous Land owner's forum (13 community lands) formed.

Development of Movement Building Toolkit

Taking lessons from other movements like Latin America and the Asian Indigenous people's social movements, PARAN-IMPACT have developed a movement tool kit that will guide the various approaches towards movement building at all levels. This to decolonize the notion that movement building is a top-down approach or that community unless led by CSOs and NGOs in terms of advocacy cannot self-organize and come up with social movements that define who they are, their issues and solutions without outsider agenda of one fit all approach.



Picture 3: Community meetings held to develop the tool kit

COVID-19 RAPID RESPONSES AS A COLLECTIVE MOVEMENT



Picture 4: Community members receiving PPEs distribution

The impact of Covid-19 has been experienced globally creating a health, economic, Climate change and security crisis. Due to the current situation with the mutation of the emerging waves, PARAN alliance members since the reporting of the first case in Kenya, were able to organize themselves and through the re-alignment of the budget lines to pro-actively respond to the community's needs. From the CJRF funding a total of USD 20,000 were allocated to the founding members to create awareness on Covid-19, provision of PPEs and food stuff to the vulnerable especially the aged, women with underlying conditions and People with Disability.

The response reached in terms of provision of PPEs and food stuff, a total of 3,574 beneficiaries and in terms of awareness, over 650,000 through local vernacular radios and use of public address systems in the 4 counties of Laikipia, Isiolo, Samburu and Marsabit.

THEMATIC FOCUS 3: UNDERSTANDING THE LANDSCAPE AND BRIDGING THE GAP BETWEEN RESEARCH, POLICY AND PRACTICES

PARAN-IMPACT received support to undertake researches to generate evidence-based information on action-oriented research from United State University and International Development Studies in the UK. The ongoing research projects are guided by a set of objectives and through the engagement of 11 community researchers/fellows to collect data using digital tools (an App - View-World and Tablets) with defined research questions. The focus of the researcher covers 5 counties of Laikipia, Isiolo, Marsabit, Samburu and a possibility of Wajir if the situation gets better.

PROJECT (I)

Understanding the Impacts of Covid-19 in Fragile and Conflict Affected Regions: A Case Study of Northern Kenya

The project will be guided by the following objectives:

- ⇒ To expand the research base on Covid-19 responses and conflict dynamics in fragile and conflict affected regions;
- ⇒ To document and raise the profile of conflict sensitive responses to Covid-19;
- ⇒ To collate lessons learnt from those involved in and leading Covid-19 responses in fragile and conflict affected regions to inform practice, policy and decision-making in northern Kenya, as well as in other contexts and during future crises.

PROJECT (II)

Supporting Grassroots Environmental Peacebuilding Movements in Northern Kenya

Funded by United States Institute of Peace (USIP), which is trying to achieve a better understanding of how grassroots environmental peacebuilding movements work to reduce environment-related violent conflict in fragile contexts, and to identify and facilitate opportunities for supporting, sustaining, scaling and linking such movements. This goal will be achieved by pursuing two objectives:

- ⇒ Conducting research with PARAN Alliance to advance knowledge of how grassroots environmental peacebuilding movements emerge and work to reduce environment-related violent conflict, and the challenges they face sustaining, scaling and linking their movements in fragile contexts; and
- ⇒ Designing and piloting a training program for PARAN Alliance to address the challenges they face sustaining, scaling and linking their movement, and generating practical guidance on how to support grassroots environmental peacebuilding movements in other fragile contexts.

PROJECT (III)

Desert Locust research was also carried to document the oral history and the indigenous Knowledge and approaches of addressing the locust invasion.



Picture 5: Desert locust invasion

8 Community researchers were engaged and 30 community scouts trained on identification, reporting and documentation of the onset of Locust before hashing to call for response. The oral history methodology was used and generated information way back to 1940s as the oldest respondents can remember. During the oral history collection, it come out clear that the communities were not involved and the approach taken on using pesticides (Aircraft spraying) had negative impacts and the communities should have been involved so that the approach taken to respond was owned. The loss of livestock and bird species, pollution of water points was reported by the community members.

THEMATIC FOCUS 4: PARTNERSHIP AND BROADENING THE SPACE FOR ADVOCACY AND INFLUENCE

PARAN-IMPACT have built a partnership with Community Land Action Now (CLAN) to bolster their strength in address the issue of Land Rights and the Human Rights Abuses against the forest communities and Indigenous Peoples. In addition, the two networks have worked together in challenging the current situation on investments that are not responsible and through forced acquisition of community land have gone against the international conventions. The impact of government infrastructural projects on community land and territories and rights of indigenous people. More than 6 meetings have been held on the same, with the culmination on a round table meeting with investors and community representatives and their institutions. The partner has seen the mobilization of resources to address community land registration process and historical land injustices that are yet to be secured for the commencement of the processes.

MoU Signed between National Land Commission (NLC) and IMPACT on Areas of Collaboration

In light to the current Community land registration process, IMPACT as the convener of PARAN alliance, took a bold stand to approach the National Land Commission to address the extent of community lands which has often been stated as 70% of the Kenyan Land mass and how this was arrived at. With the signing of the MoU, the Parties will endeavor to explore multiple areas of activities relating to their efforts to strengthen natural resource management, and monitoring of land rights and interests in Kenya.

To achieve this milestone various deliberation in terms of in-persons and virtual meetings were held to lay the foundation on the approach to have partnership with the government on the overarching issue on Community land.



Picture 6: NLC-IMPACT MoU signing

- ◆ A preparatory in-person 2-day meeting was held with NLC officials and partners (NAMATI, Kenya Land Alliance and Pamoja Trust) to front the proposal to the NLC for recommendations and development of the proposed activities.
- ◆ 4 Virtual meetings were held to go through the MoU to meet the thresholds
- ◆ Signing of the MoU meeting in Nairobi and Ministry of Lands office
- ◆ 2 days planning workshop to firm up the work-plan, roles and responsibilities
- ◆ Collaborative activities:
 - ⇒ Critique, input, validate and adopt the PARAN FPIC tool.
 - ⇒ Co – organize Community Land Summit with other stakeholders.
 - ⇒ Promote the monitoring of land rights and interests in any select Counties deemed fit by the parties.
 - ⇒ Audit data available on dissolved and undissolved group ranches.
 - ⇒ Develop a community land atlas based on agreed parameters in the selected counties.
 - ⇒ Co-organize the field visits to ascertain the parameters.
 - ⇒ Co-organize/facilitate learning and policy dialogues.
- ◆ Mobilization of resources to achieve the desired results of the collaboration in terms of community Land Registration.

THEMATIC FOCUS 5: INFLUENCING COUNTY & NATIONAL LEVEL POLICY AND DIALOGUE

While influencing policy at different fronts both national and locally, the milestones achieved on the basis of the impact of climate change and the landscape, is the accenting of the Disaster Risk Reduction policies. This came at a time where COVID-19 as a global crisis for the County governments to re-look at the approach to disasters and emergencies in a more wholistic lens.

◆ KEY RESULT AREA 1

The Disaster Risk Reduction policies for Laikipia and Samburu have been given a nod by the County Assemblies from the respective counties.



Picture 7: Laikipia county MCA lobby meeting

◆ KEY RESULT AREA 2

The Laikipia and Samburu Disaster Risk Reduction Acts have been passed.

◆ KEY RESULT AREA 3

Ongoing development of the Samburu Rangelands policy that draws itself from IGAD and National draft rangelands policy. Samburu county aims to develop the village rangelands policy for their communities. This process has been supported through IMPACT and PARAN.

◆ KEY RESULT AREA 4

The Alliance members also contributed to the review of two policies by participating virtually and in written memoranda. The Forest Management Policy of 2020 and the Wildlife Conservation and Tourism Management Act of 2013 focusing on the definition of protected areas which includes community conservancies and the stringent penalties that will be punitive to the communities and the expansion by acquisition of community lands through conservation as a conduit for investors.

VIRTUAL MEETINGS & LEARNING

With the ongoing Covid-19 pandemic and WHO containment measures it was inevitable to adopt to the new normal of doing things and to continue the interaction with our donors, partners and alliance members. While carrying the research on Engaging Citizen on a socially just Climate action, 18 zooms sessions were conducted with the respondents and the lead person. It was the first time that we got engaged in that experience of using digital tools for learning and advocacy influencing.

The PARAN members were also engaged in International virtual conferences and workshop based on their interest such as meetings on Agro-Ecology and Food systems, UN mechanisms and processes, Environmental peace building, The Land sector and impacts on indigenous peoples.

IN-PERSON PARAN ALLIANCE MEETINGS HELD

As covid-19 pandemic has changed the way things are done, it was fortunate that the Kenyan government containment measures allowed face-face meetings of up to 15 persons and not with long hours. With this



Picture 8: Laisamis sub-county leaders meeting and registration of community land

in mind the Alliance held 4 meetings to deliberate on the registration of alliance, development of the articles of association and to propose a governance structure that is all inclusive and admission of new members.

Outputs of the meetings held:-

- Articles of Association/Constitution developed and agreed upon for registration
- Development of the proposed organogram with the all members having equal vote.

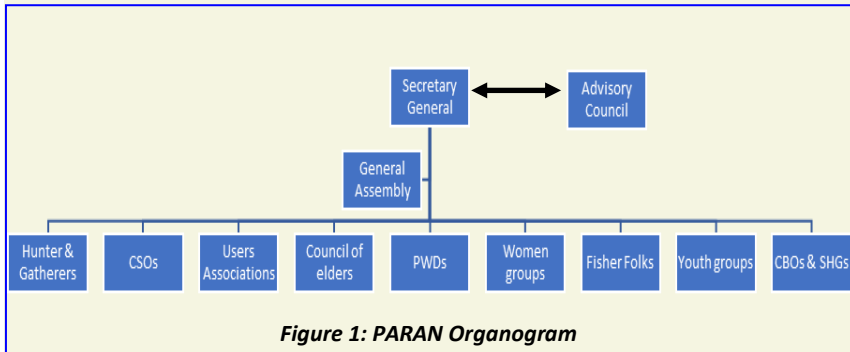


Figure 1: PARAN Organogram

- Formal registration of the PARAN Alliance was finalized with certification acquired.
- Organizational policies developed for the Alliance.
- Recruitment of members through formal process and a membership EOI form developed and shared for founding and new members.

Updates from IMPACT as the convenor were presented to the members on the various resource mobilization initiatives with a focus on joint activities in strengthening movement building. Successful grant applications on the following were shared; -



Picture 9: Timothy Larpei taking the participants through the community land registration process

- Agro-Ecology- “Securing Pastoralists’ rights and guardianship of their land through advancing agroecological solutions in Kenya’s Northern Rangelands”.

To achieve this the project is guided by these 4 broad objectives:

- To enhance the traditional pastoralists practices among Maasai people in Northern Kenya through strengthening the direct participation of Indigenous Peoples in the governance of their landscapes and natural resources.
- To strengthen the voices of PARAN Alliance Constituents around agroecology and food sovereignty by influencing laws and policies to recognize and appreciate indigenous traditional food systems.
- To strengthen the capacity of PARAN alliance members to advance food sovereignty and agroecology to withstand processes that undermine their traditional forms of livelihoods.
- To broaden and deepen inter-generational knowledge transfer in pastoralists' communities to meaningfully engage youth and elders in effective advocacy to defend their rights, landscapes, and food systems.

- ◆ USIP - “Supporting Grassroots Environmental Peacebuilding Movements in Northern Kenya”
- ◆ IDS - Understanding the Impacts of Covid-19 in Fragile and Conflict Affected Regions: A Case Study of Northern Kenya”
- ◆ A report on the survey on the organization Capacity Assessment at 3 tier level was presented from the individual organizations, collaborations within counties or cross county and the larger Alliance as an umbrella. From the report the organizations are at different levels of growth and require building their capacity, governance structures that are inclusive, resources mobilization (Human capital, technological capital in terms of financial software and training, approaches to movement building, UN processes, protocols and mechanisms.

THEMATIC FOCUS 6: LEARNING, LINKING & NETWORKING

Tanzania Ex-change Visit

The representatives of PARAN alliance members through networking with the Pastoral Tanzanian communities visited the Pastoralist Women Council, Ujamaa Natural Resource team, PINGOs and Tanzania Resource Natural Forum to learn from their experiences of Land legislation, ownership, investment and Natural resources management from the Local to the National level. In addition, it was quite exciting to learn from the Pastoralist Women Council on how they self-organize the level of influence they have in terms of women empowerment and engagement with government.

Lessons learnt:

- Entrepreneurship and investors agreements (Not more than 3 months and 1 pager)
- Skills development in areas that were male dominated (Brick making, Solar Installation, dairy farming through supply of breeds of livestock.
- Development of the saving culture that has seen the evolution of micro-credit scheme for the women to access financial support.
- Good governance and capacity building through informal learning institutions
- Integration of Indigenous Knowledge in natural resource management with research.
- Establishment of Indigenous Women Leadership forum and gender strategy that will guide the leadership and representation at all levels is anchored upon.

THEMATIC FOCUS 7: MEMBERSHIP

The Alliance has developed a membership form that new members interested to join can fill their details and profile of the what they do and the geographic scope. The online form can be filled and submitted whereby one can access the information of the organizations requesting for membership updated on the website.

Currently the Alliance has received requests from the 5 organizations below and vetting is still ongoing: -

- **Pastoralist Women for Health and Education (Isiolo County)** - The organization focuses on health disasters and emergencies, education and life skills beyond literacy, civic education and public participation in governance, natural resource management and building resilience, brand strengthening and institutional capacity development and gender-based violence, peace building and cohesion.
- **Baringo Women and youth organization**- The organization lobbies and advocates for rightful position of the Baringo women and youth minority communities in all spheres of life and development. Key focus areas include women and youth empowerment both economically and socially, environmental related issue like climate change adaptations and mitigations, peace and conflict resolutions, fighting retrogressive culture like FGM and early marriages
- **Pastoral Communities Empowerment Programme (PACEP) (West Pokot)**- Focuses on education and training, health, environment conservation and climate change issues, gender equality - women empowerment, human rights and food security.
- **Patinaai Osim Community Care Organization**- is a NGO based in Kajiado County, Kenya. The prime focus of Patinaai Osim is women and girl's empowerment in the pastoralist's communities. Ramat Oontoyie - (Maasai translation for nurture the girl), Tomonisho (Mother and Child), Naretisho (Building Capacity), Climate Change and Environmental conservation, policy engagement at the county level.
- **Kaputir Resource Management Organization (Turkana)**- To enhance climate change and conflict impacted marginalized pastoral communities' resilience through sustainable livelihood systems, conflict transformation and good governance advocacy in the environment and natural resource management (Water, Land, Extractives). The organization focuses on Food and nutritional security, conflict transformation and peace building, environment and natural resource governance especially water, land and extractives.

ONLINE CAPACITY BUILDING UNDER OUR PARTNERS LEVERAGING ON CJRF SUPPORT

Weltfriedensdienst (Civil Peace Service)

- Conflict analysis
- Conflict Transformation
- Do no Harm training

NAMATI

- Use of salesforce as a reporting tool for Community Land Protection.
- Training on the Community Land registration process and documentation

CJRF

- Empowering community learning experience virtual sharing for Africa and Asia
- Lessons from Climate Justice resilience Fund- Discussion recommendations of the Independent review on the grantmaking, stories and evidence from community empowerment and advocacy and themes of interest and sharing the experience with the CJRF leadership. (Understanding intersectionality, transformation change

University of Sheffield virtual workshop

- Desert Locust research tool for oral history and picture/ Photographs interpretation information collection.
- Development and induction on the digital tool for data collection on Grassroots Environmental Peacebuilding Movements in Northern Kenya and on “Understanding the Impacts of Covid-19 in Fragile and Conflict Affected Regions: A Case Study of Northern Kenya”

Mercy Cops

- IMPACT organization capacity carried with the aim of developing partnership (They are yet to finalize the report.
- Training on Trauma healing in person training for IMPACT peace program key staff carried out as the project envisages to expand the geographic scope.

NEXT STEPS

- Opening of the Bank Account with its signatories
- Development of the charter that all members will sign and abide with.
- Hold members in-person meeting.
- Training of the members on FPIC and Movement building tools
- Piloting of the FPIC guideline with one of the Communities
- Hold a Food Festival on food sovereignty
- Hold the Community Land Summit to celebrate 5 years of the promulgation of the Community Land Act 2016.
- Community exchange visit on Community Land experience sharing with those that have registered.
- Capacity building on a need-based approach for the members

OVERALL CHALLENGES FACING COMMUNITIES AND ACTORS

- COVID-19 protocols; - restrictions have slowed down engagements with communities and actors.
- Few non-state actors in community land matters.
- Lack of preparedness by the county governments.

LESSONS LEARNT

- There is strength in coordinated collective voice.
- Change in modus operandi is required to create impact.
- Communities have the capacity of self-organizing to address their own challenges.
- Alliances and Networks can support Individual institutional achievement for their specific Interest and mandates from members Skills and expertise.
- Lack of community organizing in response to covid 19 management.
- Government willingness to collaboration with Communities on land and other policy legislation (recommendation).

NEW FUNDING PARTNERS

PARTNERS	AREA OF COLLABORATION
United States Institute of Peace - USIP	Research on environmental peace
Institute for Development Studies - IDS	Impact of covid 19 in conflict fragile region
National Land Commission	MOU signed to undertake mapping of community and development of community land atlas
Kenya National Human Rights Commission	Business and human rights
County of Samburu	Disaster risks reduction, rangeland policies and community land
County of Laikipia	Disaster risks management policy and capacity building for community groups
Ujamaa National Resource team - UNRT	Exchange learning visits
CLAN	Collaboration in securing community land and forest communities.
Community Land Groups in Samburu and Laikipia	Community land
Inclusive Conservation Initiative	Involvement of indigenous peoples and local communities in ecosystem and biodiversity conservation.
SWEDWATCH	Resource mobilization and training on business and human rights
TROCAIRE	Inter community learning visit targeting Turkana
University of Birmingham and University of Sheffield	Resource mobilization and research.
International Institute for Environment and Development - IIED	Research, documentation and publication
ICCAD from Bangladesh	Linking and learning from experiences on grassroots community initiatives.



Pastoralists Alliance
for Resilience and
Adaptation in Northern
Rangelands
Building and strengthening resilient, transformational
partnerships and social movements

ADDRESS

Karionga Village,
Jua Kali Centre
P.O BOX 499 – 10400
Nanyuki.

PHONE

+254 (0) 724540669
+254 (0) 722663090
+254 (0) 721637163

SOCIALS



<https://paranalliance.org/>



paran.alliancekenya@gmail.com



Paran Alliance Kenya



PARAN_Kenya



paranalliance



paran_alliance_kenya



Paran Alliance Kenya

“We envisage a world of universal respect for human rights and human dignity, the rule of law, justice, equality and non-discrimination; of respect for race, ethnicity and cultural diversity; and of equal opportunity permitting the full realization of human potential and contributing to shared prosperity. A world which invests in its children and in which every child grows up free from violence and exploitation. A world in which every woman and girl enjoys full gender equality and all legal, social and economic barriers to their empowerment have been removed. A just, equitable, tolerant, open and socially inclusive world in which the needs of the most vulnerable are met.”